



EPL153

Electric Pallet Truck 1.5T

- Smart Lithium Battery;
- Newly Designed Handle Head;
- pass market tests of safety and reliability.

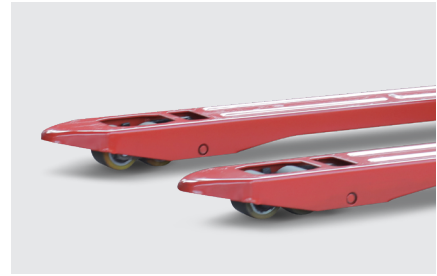
EP EQUIPMENT CO.,LTD
www.ep-eq.eu



FEATURE

■ Smart Lithium Battery

EPL153 uses lithium batteries and built-in chargers, it saves worries about the endurance and there is no need of special charging area.



■ Newly Designed Handle Head

EPL153 is lifted by electricity and lowered manually, there is no need to worry about damaging goods by uncontrollable lowering.



■ Pass Market Tests Of Safety And Reliability

EPL153 has 10-year market-tested components.



■ Standard



■ Option(With Castor Wheels)

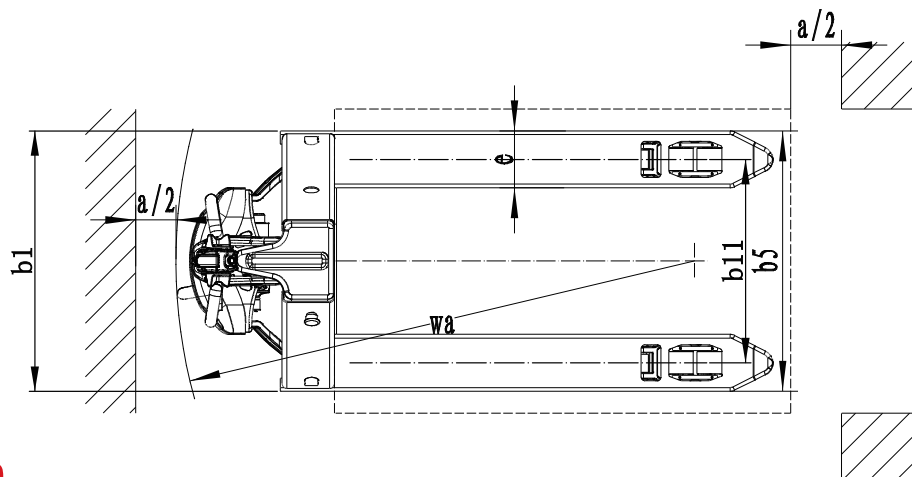
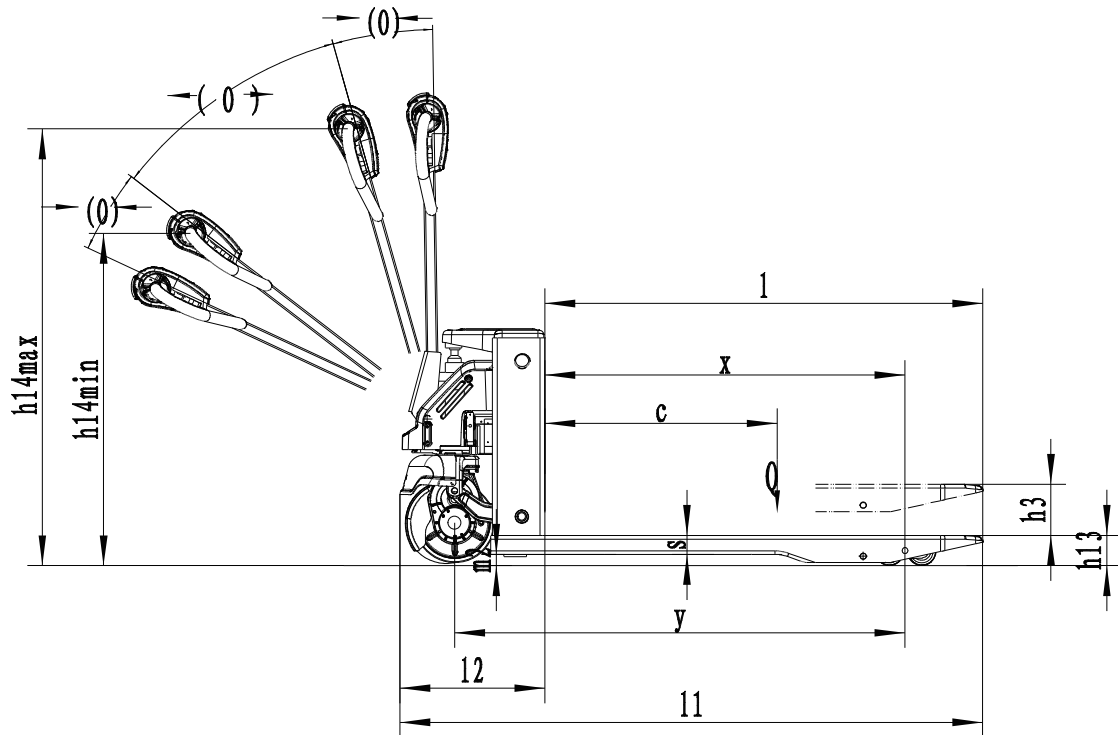


Electric Pallet Truck 1.5T

EPL153

Distinguishing mark	1.1	Manufacturer			EP
	1.2	Model designation			EPL153
	1.3	Drive			Electric
	1.4	Operator type			Pedestrian
	1.5	Load capacity	Q	kg	1500
	1.6	Load center distance	c	mm	600
	1.8	Load distance, centre of drive axle to fork	x	mm	950(880)
	1.9	Wheelbase	y	mm	1190(1120)
	Service weight	2.1	Service weight		kg
2.2		Axle loading, laden front/rear		kg	540/1070
2.3		Axle loading, unladen front/rear		kg	100/15
Tyres/chassis	3.1	Tyre type			Polyurethane
	3.2.1	Tyre size, front		mm	Φ210x70
	3.3.1	Tyre size, rear		mm	Φ80x60(Φ74x88)
	3.4	Additional wheels (castor wheels)		mm	—
	3.5	Wheels, number front/rear (x=drive wheels)		mm	1x/4(1x/2)
	3.6.1	Tread width, front	b10	mm	—
	3.7.1	Tread width, rear	b11	mm	410/(535)
Dimensions	4.4	Lift height	h3	mm	115
	4.9	Height of tiller handle in drive position min./max.	h14	mm	750/1190
	4.15	Lowered height	h13	mm	80
	4.19	Overall length	l1	mm	1550
	4.20	Length to face of forks	l2	mm	400
	4.21	Overall width	b1/b2	mm	560(685)
	4.22	Fork dimensions	s/e/l	mm	50x150x1150
	4.25	Distance between fork-arms	b5	mm	560(685)
	4.32	Ground clearance, center of wheelbase	m2	mm	30
	4.34.1	Aisle width for pallets 1000×1200 crossways	Ast	mm	1650
4.34.2	Aisle width for pallets 800×1200 crossways	Ast	mm	1850	
4.35	Turning radius	Wa	mm	1390	
Performance data	5.1	Travel speed, laden/unladen		km/h	4.0/4.5
	5.2	Lifting speed, laden/unladen		m/s	0.017/0.024
	5.3	Lowering speed, laden/unladen		m/s	0.09/0.06
	5.8	Max. gradeability, laden/unladen		%	6/16
	5.10	Service brake			Electromagnetic
Electric-engine	6.1	Drive motor rating S2 60 min		kW	0.75
	6.2	Lift motor rating at S3 15%		kW	0.5
	6.4	Battery voltage/nominal capacity		V/Ah	24/20
	6.5	Battery weight		kg	5
Addition data	8.1	Type of drive control			DC
	10.5	Steering design			Mechanical
	10.7	Sound pressure level at the driver's ear		dB(A)	<74

If there are improvements of technical parameters or configurations, no further notice will be given.
The diagram shown may contain non-standard configurations.



Option

No.	Optional items	EPL153
1.1	Fork length	●1150/○900/○1000/○1220/○1500
1.2	Fork width	560/685
1.3	Fork lowered height	80
2.1	Load wheel type	●Double/○Single
2.2	Load wheel material	●PU
2.3	Drive wheel material	●PU/○Trace PU
2.7	Battery capacity	●24V/20Ah
2.8	Charger	24V-10A Internal
3.3	Castor wheels	○
3.12	Hummer	●
3.16	Vertical handler working	●

Note: ●Standard ○ Optional - Inconformity

WAELLER sp. z o.o. sp. k.

PL 83-034 Trąbki Wielkie, ul. Towarowa 1 • PL 80-457 Gdańsk, ul. Powstańców Wielkopolskich 11
Tel. (+48) 58 683 01 53, 58 691 27 15, 784 046 763, 601 642 339

biuro@ep-eq.pl • www.ep-eq.pl