



ESR151

1.5T Electric Ride-on Stacker

- Integrated charger
- Operation safety assurance
- Stability tested
- Comfortable operation with a foldable ride-on pedal

EP EQUIPMENT CO.,LTD
www.ep-eq.eu

FEATURE



■ Integrated charger

ESR151 is equipped with a 24V/15A integrated charger which provides charging convenience and flexibility in daily usage.



■ Operation safety assurance

ESR151 is able to automatically switch to the low-speed mode when the height of the forks reaches to 720mm to ensure the operation safety. Also, with iron net covering the mast, the operator is protected from the goods that fall accidentally.



■ Stability tested

ESR151 is rigorously tested and able to pass the Industrial Vehicle Stability Verification GB/T26949.1 ~ 2012. Stability has been EP stacker's strong suit.



■ Comfortable operation with a foldable ride-on pedal

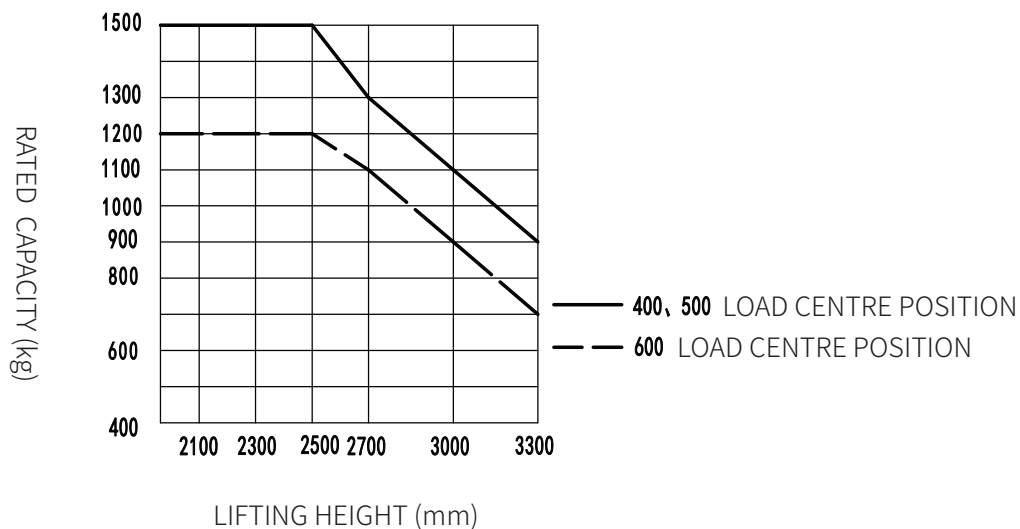
ESR151 adopts user-centric design and offers more comfort for operation via a ride-on pedal. Also with the pedal folded, it is allowed to operate the stacker in confined space in the turtle speed.

1.5T Electric Ride-on Stacker ESR151

Distinguishing mark	1.1	Manufacturer			EP
	1.2	Model designation			ESR151
	1.3	Drive			Electric
	1.4	Operator type			Standing
	1.5	Load capacity	Q	kg	1500
	1.6	Load center distance	c	mm	500
	1.8	Load distance, centre of drive axle to fork	x	mm	798
	1.9	Wheelbase	y	mm	1215
	Service weight	2.1	Service weight		kg
2.2		Axle loading, laden front/rear		kg	870/1300
2.3		Axle loading, unladen front/rear		kg	510/160
Tyres/chassis	3.1	Tyre type			Polyurethane
	3.2.1	Tyre size, front		mm	Ø210×70
	3.3.1	Tyre size, rear		mm	Ø74×72
	3.4	Additional wheels (castor wheels)		mm	Ø130×55
	3.5	Wheels, number front/rear (x=drive wheels)		mm	1x, 2/4
	3.6.1	Tread width, front	b10	mm	644
	3.7.1	Tread width, rear	b11	mm	400
Dimensions	4.0	Max. Lift Height	H	mm	3016
	4.2	Retracted mast height	h1	mm	2106
	4.3	Free lift	h2	mm	—
	4.4	Lift height	h3	mm	2930
	4.5	Height, mast extended	h4	mm	3571
	4.6	Initial lift	h5	mm	—
	4.9	Height of tiller handle in drive position min./max.	h14	mm	1120/1315
	4.10	Height of wheel arms	h8	mm	—
	4.15	Lowered height	h13	mm	90
	4.19	Overall length	l1	mm	1832
	4.20	Length to face of forks	l2	mm	682
	4.21	Overall width	b1/b2	mm	850
	4.22	Fork dimensions	s/e/l	mm	60/ 170/ 1150
	4.24	Fork carriage width	b3	mm	680
	4.25	Distance between fork-arms	b5	mm	570
	4.26	Distance between wheel arms/loading surfaces	b4	mm	—
	Performance data	4.31	Ground clearance, laden, below mast	m1	mm
4.32		Ground clearance, center of wheelbase	m2	mm	25
4.34.1		Aisle width for pallets 1000×1200 crossways	Ast	mm	2328
4.34.2		Aisle width for pallets 800×1200 crossways	Ast	mm	2262
4.35		Turning radius	Wa	mm	1488
5.1		Travel speed, laden/unladen		km/h	4.0/4.5
5.2		Lifting speed, laden/unladen		m/s	0.10/0.14
5.3		Lowering speed, laden/unladen		m/s	0.10/0.10
5.8		Max. gradeability, laden/unladen		%	3/10
5.10		Service brake			Electromagnetic
Electric-engine	6.1	Drive motor rating S2 60 min		kW	0.75
	6.2	Lift motor rating at S3 15%		kW	2.2
	6.4	Battery voltage/nominal capacity		V/Ah	2x12/105
	6.5	Battery weight		kg	2x30.5
Additional data	8.1	Type of drive control			DC
	10.5	Steering design			Mechanical
	10.7	Sound pressure level at the driver's ear		dB(A)	74

If there are improvements of technical parameters or configurations, no further notice will be given. The diagram shown may contain non-standard configurations.

RATED CAPACITIES GRAPH



Option

No.	Optional items	ESR151
1.1	Fork length	●1150
1.2	Fork width	●570-685
1.3	Fork lowered height	●90
2.1	Load wheel type	●Double
2.2	Load wheel material	●PU
2.3	Drive wheel material	●PU
2.7	Battery capacity	●105Ah
2.8	Charger	●24V-15A Internal
2.9	Battery indicator	●With time
3.3	Castor wheels	●Yes and not customized
3.24	side supports	●No○Yes and not customized

Note: ●Standard ○ Optional - Inconformity

WAELLER sp. z o.o. sp. k.

PL 83-034 Trąbki Wielkie, ul. Towarowa 1 • PL 80-457 Gdańsk, ul. Powstańców Wielkopolskich 11
 Tel. (+48) 58 683 01 53, 58 691 27 15, 784 046 763, 601 642 339
 biuro@ep-eq.pl • www.ep-eq.pl