

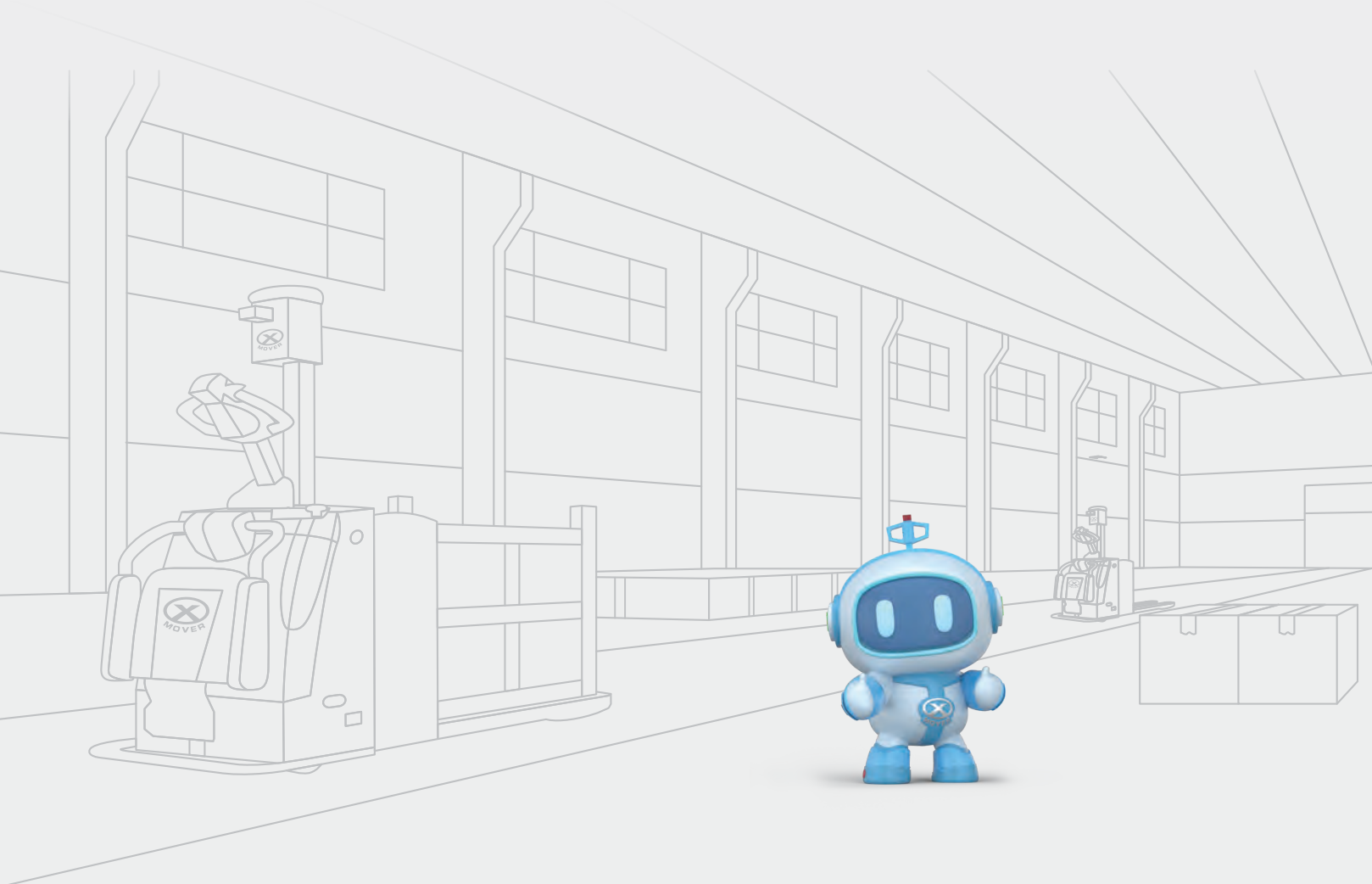


AUTOMATIC PALLET TRUCKS

EXP15V26 & EXP20



Contents



01

Application
Scenarios

P01

02

Features

P02

03

Use Cases

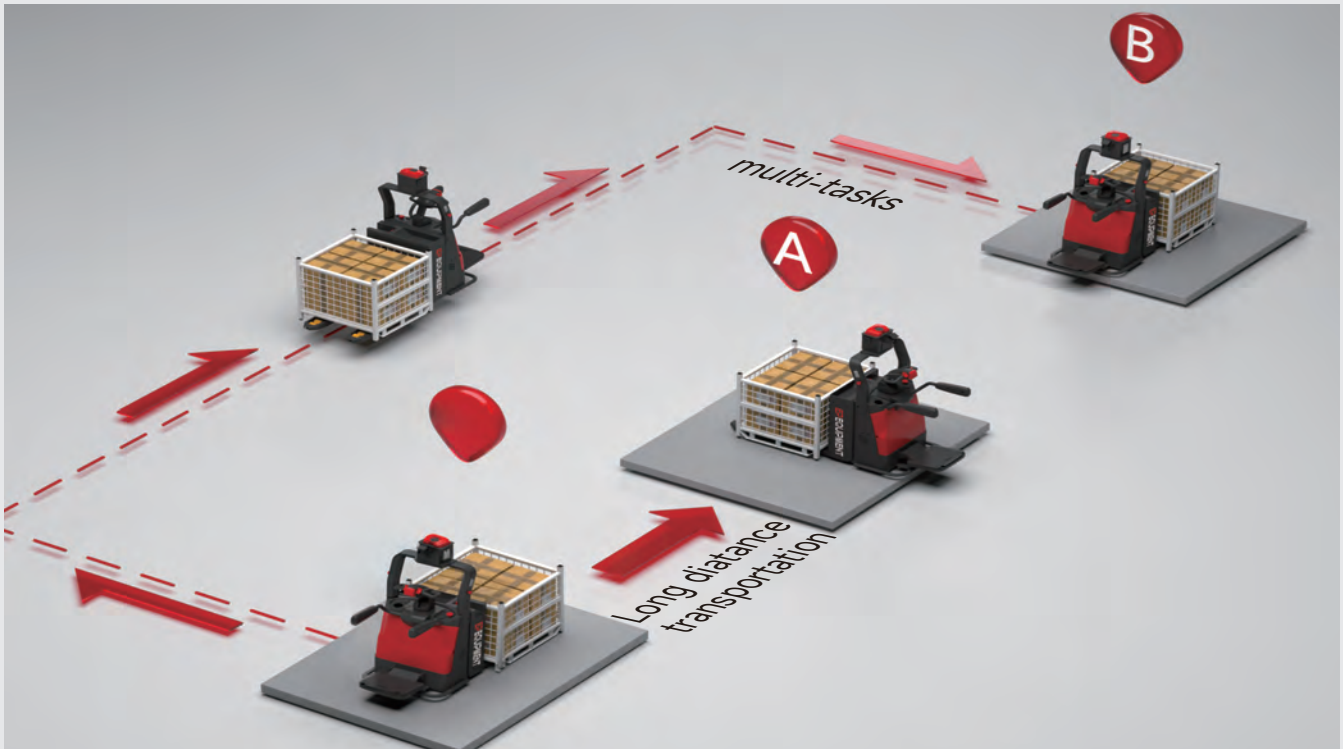
P05

04

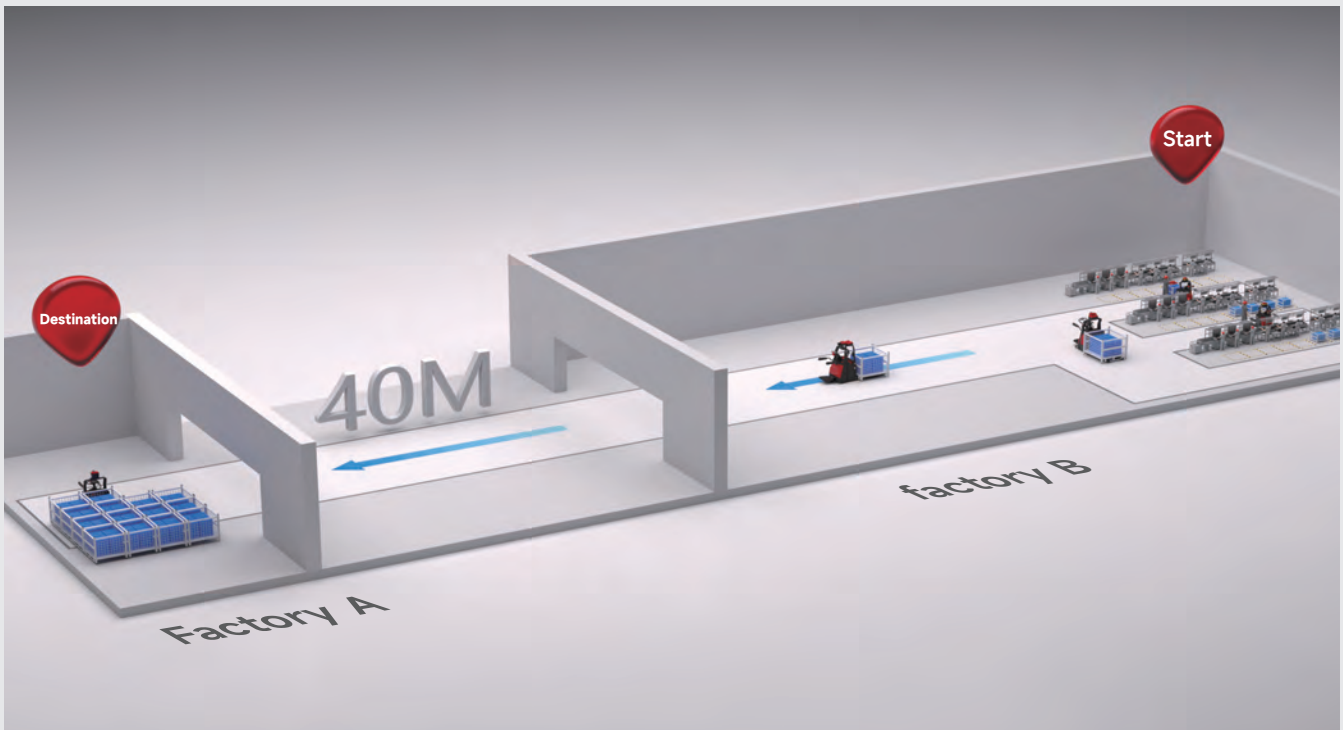
Parameters

P06

01 Application Scenarios



- Point-to-point transport (A to B)



- Long-distance transport between buildings or factories

02 Features

Simple deployment, WiFi-free automatic navigation

Automatic transportation via built-in navigation camera — No Wi-Fi or complex network setup required. Deployment is simple and operations are ready to start immediately.



Easy-to-operate keypad

User-friendly operation with no complex training required, set routes with a simple keypad, enabling automatic transport across factories, in production, and large warehouses.



Plug-in battery design

Stay productive with smart plug-in battery design. The truck features a 24V/60Ah Li-ion battery system that can be manually swapped in moments, minimizing downtime and maximizing efficiency.



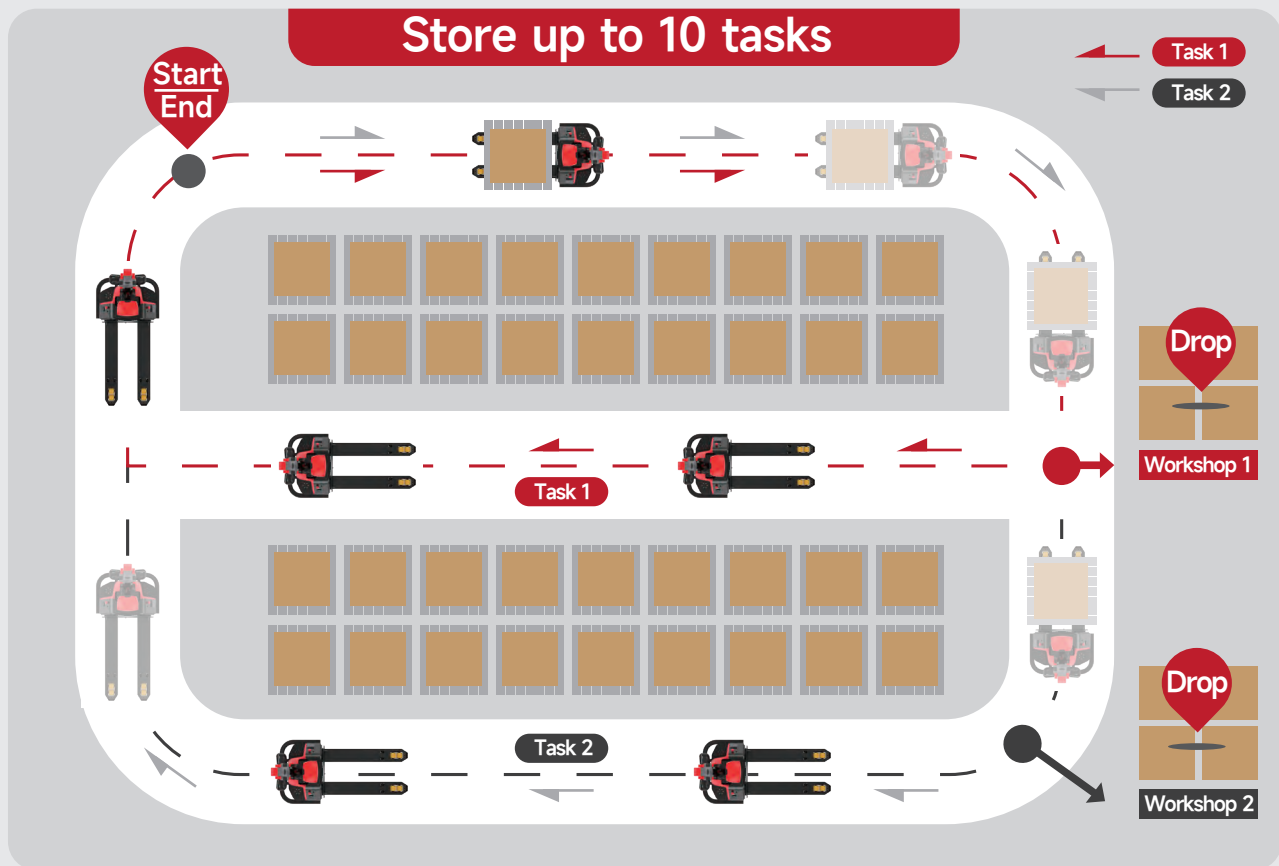
Flexible dual-mode operation

Seamless switching between operator and automatic modes, adapting easily to diverse workflow demands.



Multi-task Function for Maximum Flexibility

Maximize material handling capacity and reduce labor intensity. It can learn and store up to 10 different routes with precise point-to-point navigation and automatic drop-off. By the two buttons “+” and “-”, workers can easily switch tasks.



Designed for Repetitive Tasks, Reducing Manual Labor Needs

Save on manual labor expenses by up to 80%, all while keeping productivity high.



02 Features

Automated Pick-and-Drop Function for Streamlined Linear Tasks

Multi-Point Automated Pickup & Drop-off

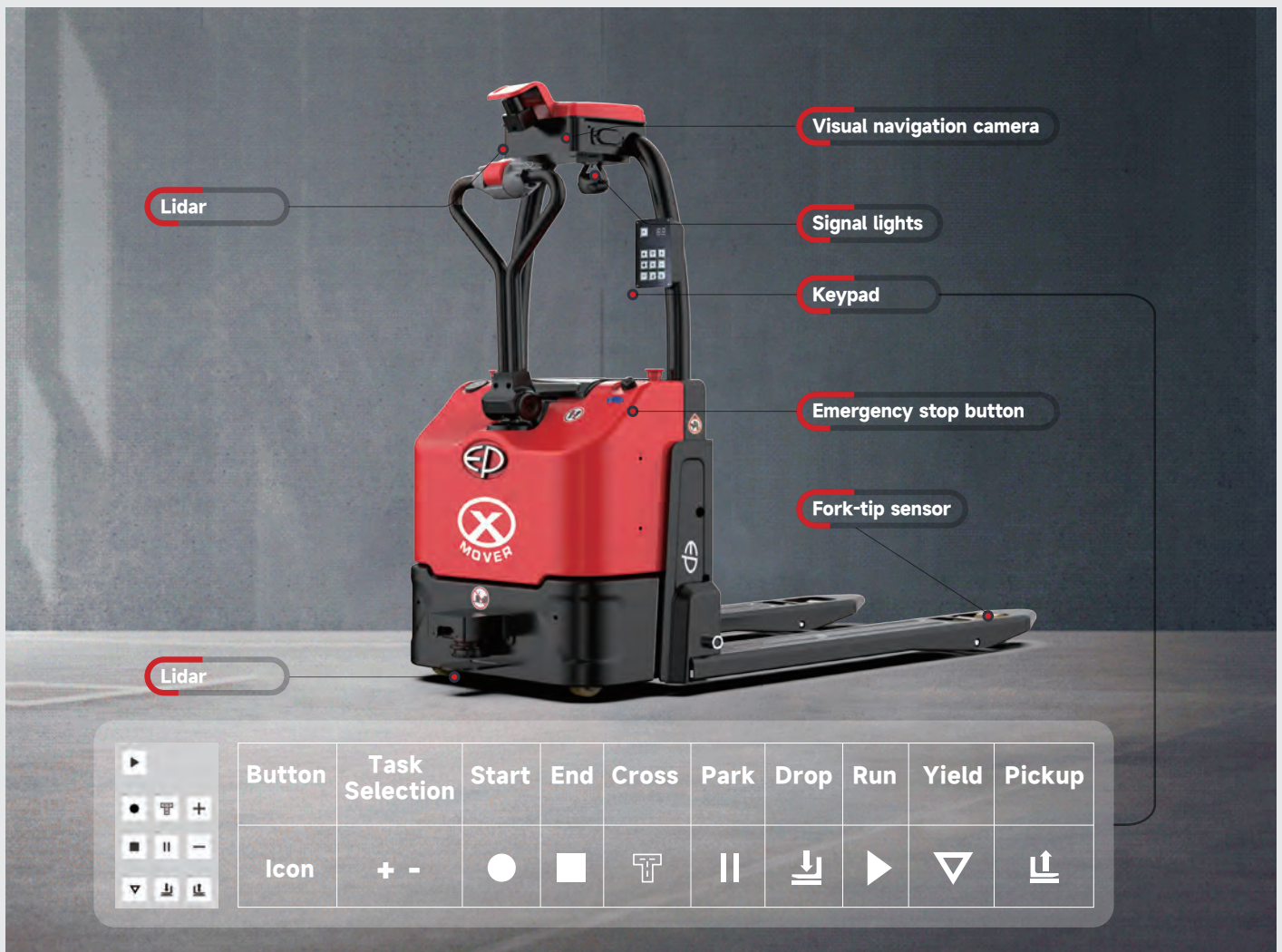
Multi-stop function allows the truck to autonomously travel to designated points along a line, completing multiple pickup and drop-off actions in sequence. This is ideal for moving goods systematically from a single aisle or delivering materials to several workstations arranged in a row.

Simple Setup with Dedicated 'Pickup' and 'Yield' Buttons

The truck can easily start and end points of a pickup line via the 'Pickup' button. To ensure safe operation in multi-robot settings, the 'Yield' button allows the truck to temporarily mark its position as a priority zone. When activated, other trunk units will detect this zone, slow down, and give way, preventing collisions and maintaining smooth traffic flow. This feature enables dynamic workflow management and supports safer human-robot collaboration.

Reliable Task Confirmation with Mechanical Position Switch

To ensure flawless execution, the truck is equipped with a mechanical position switch. This sensor provides physical confirmation of the load status by detecting the presence of a pallet on the forks. The switch is pressed down after a successful pickup and springs back up once the load has been dropped off. This foolproof detection confirms that each drop-off task is complete, signaling the truck to reliably return to the start point before beginning its next mission.



03 Use Cases

KRUIDVAT DROGIST: EXP15 Automatic Outbound Transport



The EXP15 handles the transport of consumer goods from Kruidvat's warehouse to their outbound area. With a simple push of a button, the do-it-yourself pallet truck automatically transports goods to their destination and returns to its starting point – reducing repetitive transport work for employees.

More Applications

EXP15



Electrical Appliance Manufacturing



New Materials



Intelligent Manufacturing



Mechanical Manufacturing



CNC Machining Equipment



E-commerce Industry

More Applications

EXP20



Packaging Industry



Power Industry



Food Industry



Ceramics Industry



Textile Industry



Chemical Industry



Logistics Industry



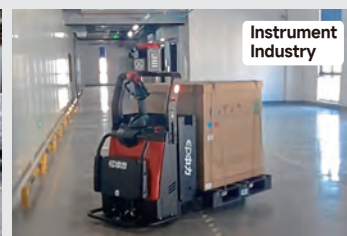
Pharmaceutical Industry



Machinery Industry



Automobile Industry



Instrument Industry



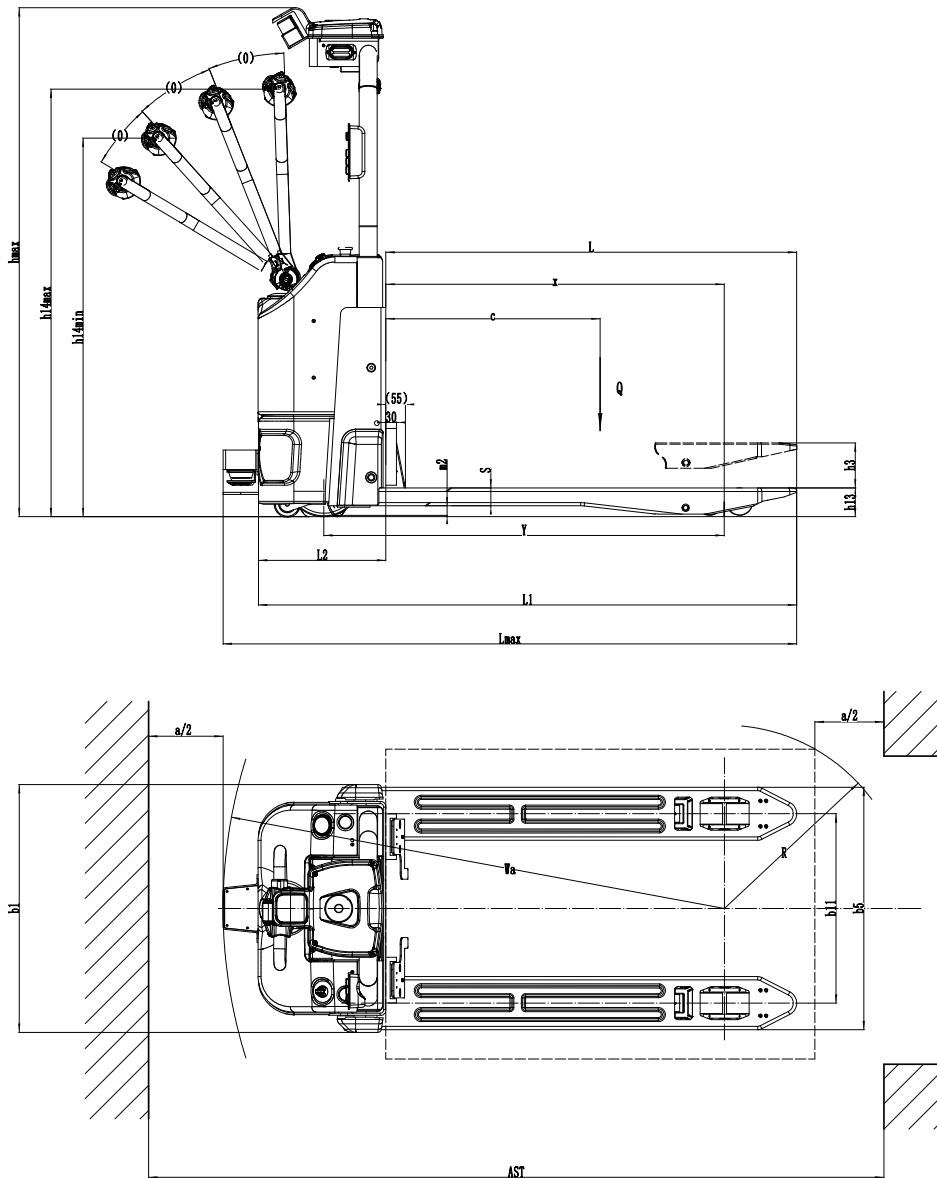
Beverage Industry

04 Parameters

Basic parameters	1.1	Manufacturer	-	-	EP
	1.2	Model	-	-	EXP15 V26
	1.3	Drive	-	-	Electric
	1.4	Operator type	-	-	Pedestrian
	1.5	Load capacity	Q	kg	1500
	1.6	Service weight	-	kg	230
	1.7	Navigation	-	-	2D visual navigation / Reflector
	1.8	Positioning accuracy	-	mm	±20
	1.9	Indoor / Outdoor	-	-	Indoor
	1.10	Parking accuracy	-	mm	±20
Battery parameters	2.1	Battery voltage / Nominal capacity	-	V/Ah	24/60
	2.2	Battery type	-	-	Lithium Iron Phosphate
	2.3	Battery weight	-	kg	14
	2.4	Usage time	-	h	3-4
Size	3.1	Dimensions	l1/b1/h1	mm	1750/644 (650) (700)/1420
	3.2	Load centre distance	c	mm	600
	3.3	Load length	x	mm	950
	3.4	Wheelbases	y	mm	1130
	3.5	Fork vertical length	l2	mm	450
	3.6	Fork dimensions	s/e/l	mm	55/150/1150
	3.7	Height with forks lowered	h13	mm	85
	3.8	Lifting height	h3	mm	90
	3.9	Lifting speed		m/s	0.020/0.035
	3.10	Lowering speed		m/s	0.058/0.046
	3.11	Outer width of forks	b5	mm	540(600)(685)
Other parameters	4.1	Travel speed, laden/unladen	-	m/s	1.1/1.25
	4.2	Max. gradeability, laden/unladen	-	%	5/5
	4.3	Cross-ditch ability	-	mm	≤20
	4.4	Turning radius	Wa	mm	1400
Channel requirements	5.1	Aisle width for pallets 1000×1200 lengthways	Ast	mm	1200
	5.2	Aisle width for pallets 1000×1200 crossways	Ast	mm	1860
	5.3	Aisle width for one-sided loading/unloading (pallet: 1200 mm L × 1000 mm W)	Ast	mm	1970
Safety	6.1	Emergency stop button	-	-	Two sides
	6.2	Voice and light	-	-	Voice
	6.3	Front protection	-	-	Top and bottom laser
	6.4	Rear protection	-	-	Fork Tip Optoelectronics
	6.5	Mechanical contact collision protection	-	-	-
	6.6	Pallet in-place detection switch	-	-	-

If there are improvements of technical parameters or configurations, no further notice will be given. The diagram shown may contain non-standard configurations.

04 Parameters



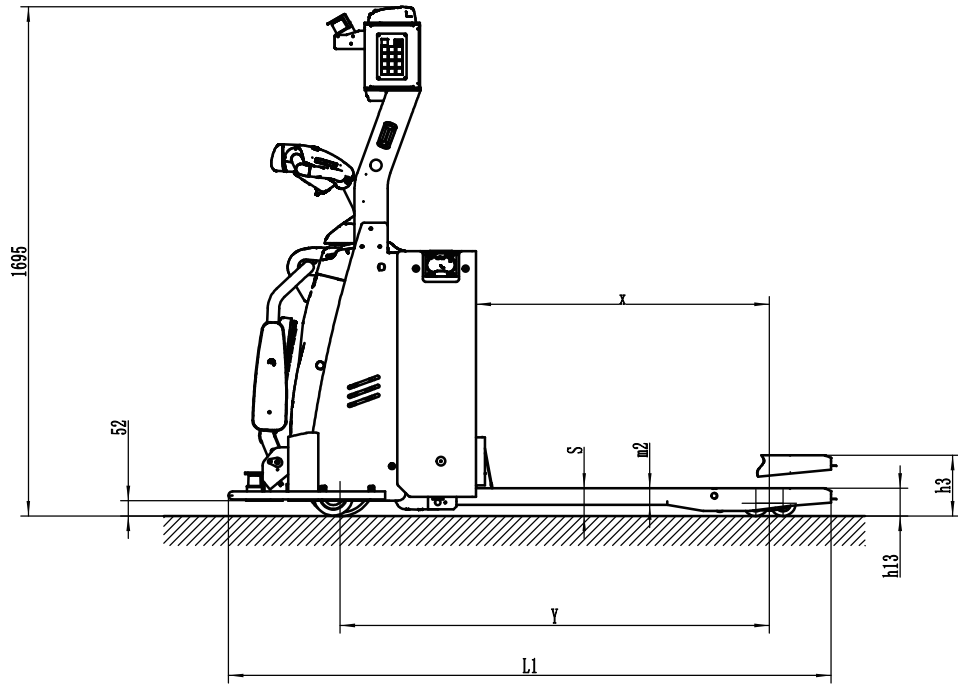
OPTIONS	EXP15 V2
Fork length	○1000●1150○1220○1350○1400○1500
Fork width	●540○600○685
Lowered height	●82
Load wheel type	●Double○Single
Load wheel material	●PU
Drive wheel material	●PU
Battery capacity	●60AH
Charger	●24V-20A External
Battery indicator	●With hourmeter
Castor wheels	●Yes
Vertical handle: Creep speed	●Yes
Drive assembly	●Large wheel unit
Tiller head	●Double-grip large tiller
Note:	●Standard ○Optional -Inconformity

04 Parameters

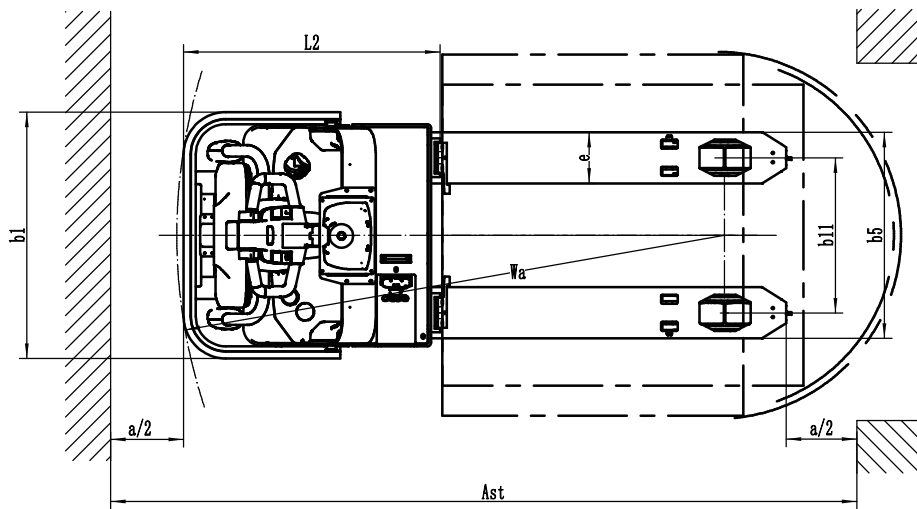
Basic parameters	1.1	Manufacturer	-	-	EP
	1.2	Model	-	-	EXP20
	1.3	Drive	-	-	-
	1.4	Operator type	-	-	Pedal
	1.5	Load capacity	-	kg	2000
	1.6	Service weight	-	kg	650
	1.7	Navigation	-	-	Camera
	1.8	Positioning accuracy	-	mm	±20
	1.9	Indoor / Outdoor	-	-	-
	1.10	Parking accuracy	-	mm	-
Battery parameters	2.1	Battery voltage / Nominal capacity	-	V/Ah	24/205
	2.2	Battery type	-	-	Lithium battery
	2.3	Battery weight	-	kg	65
	2.4	Usage time	-	h	6-8
Size	3.1	Dimensions	l1/b1/h1	mm	2000/820/1695
	3.2	Load centre distance	c	mm	600
	3.3	Load length	x	mm	980
	3.4	Wheelbases	y	mm	1428
	3.5	Fork vertical length	l2	mm	851
	3.6	Fork dimensions	s/e/l	mm	600/685/540
	3.7	Height with forks lowered	h13	mm	90
	3.8	Lifting height	h3	mm	110
	3.9	Lifting speed	-	-	-
	3.10	Lowering speed	-	m/s	0.020/0.035
	3.11	Outer width of forks	-	m/s	0.058/0.046
Other parameters	4.1	Travel speed, laden/unladen	-	m/s	9/10
	4.2	Max. gradeability, laden/unladen	-	%	8/16
	4.3	Cross-ditch ability	-	mm	≤20
	4.4	Turning radius	Wa	mm	1755
Channel requirements	5.1	Aisle width for pallets 1000×1200 lengthways	Ast	mm	1400
	5.2	Aisle width for pallets 1000×1200 crossways	Ast	mm	2656
	5.3	Aisle width for one-sided loading/unloading (pallet: 1200 mm L × 1000 mm W)	Ast	mm	2956
Safety	6.1	Emergency stop button	-	-	Two sides
	6.2	Voice and light	-	-	Voice / Light
	6.3	Front protection	-	-	Top and bottom laser
	6.4	Rear protection	-	-	Fork Tip Optoelectronics
	6.5	Mechanical contact collision protection	-	-	Front bottom+ Side bottom
	6.6	Pallet in-place detection switch	-	-	Bumper Sensor

If there are improvements of technical parameters or configurations, no further notice will be given. The diagram shown may contain non-standard configurations.

04 Parameters



Side View



Top View

Material Handling to Material Moving

EP EQUIPMENT CO.,LTD

V2601.05

www.ep-equipment.com/amr/ Email: amr@ep-equipment.eu

EP Industrial Park, Xiaquan Village, Lingfeng Street, Anji County, Huzhou City,
Zhejiang Province

EP'S Smart
Intralogsitics Solution
Automated X-Movers

